

New Bench for an Old Saw

You may remember, back in August, when we met at Alvin's shop that he had an old Sears radial arm saw. His plans were to build a long bench for it to sit on and enable him to use the saw as an accurate cut off saw. Well that plan has been put into action and Alvin (with a little bit of help) now has his radial arm saw up and running.



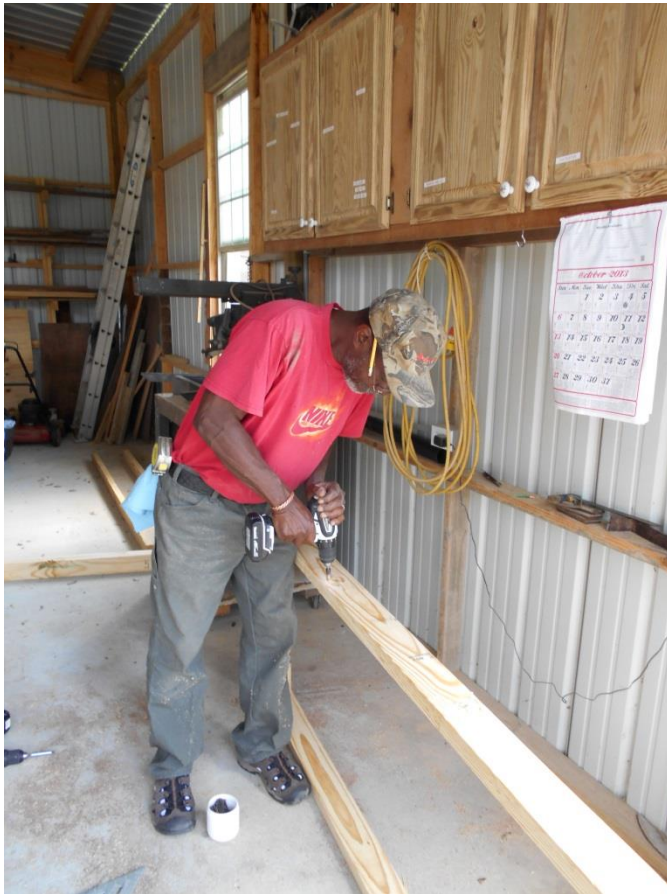
This is the wall where the new saw bench will be located. Things have been moved out of the way, measurements are taken and a quick plan is drawn up. Here's the old saw. The stand is too tall and there's not much of a table but that will soon change. Starting time is about 9:00 am.



The first thing Alvin does is to remove the old table and get dimensions of the metal frame which it is built on. Next the saw is unbolted from the old cabinet.



A frame, which will support a plywood top, is made of 2x4's. No elaborate joinery needed here, just glue, screws and nails but it must be flat and level.



The frame, having been constructed, is then attached to the wall taking care to ensure that it is level. Legs are made of 2x4's and are attached with screws to support the front edge.



With the support frame in place, the saw is now put into position and two layers of $\frac{3}{4}$ " plywood are attached using glue and nails.





Alvin uses his new planer to thickness the board he will joint and rip to make the two halves of the fence.



Next Alvin attaches the fence to the back edge of the top layer of plywood. No glue here, just screws, in case it ever has to be replaced.



Now for some final adjustments. Cut a test piece, check for square and adjust. Repeat until it cuts true and dead on.



Well, about 5 hours, 1 can of Vienna Sausage, 1 pack of crackers and 2 soft drinks later, Alvin's old saw has been given a new life and it's cutting dead square and true. Alvin, enjoy your new old saw.