



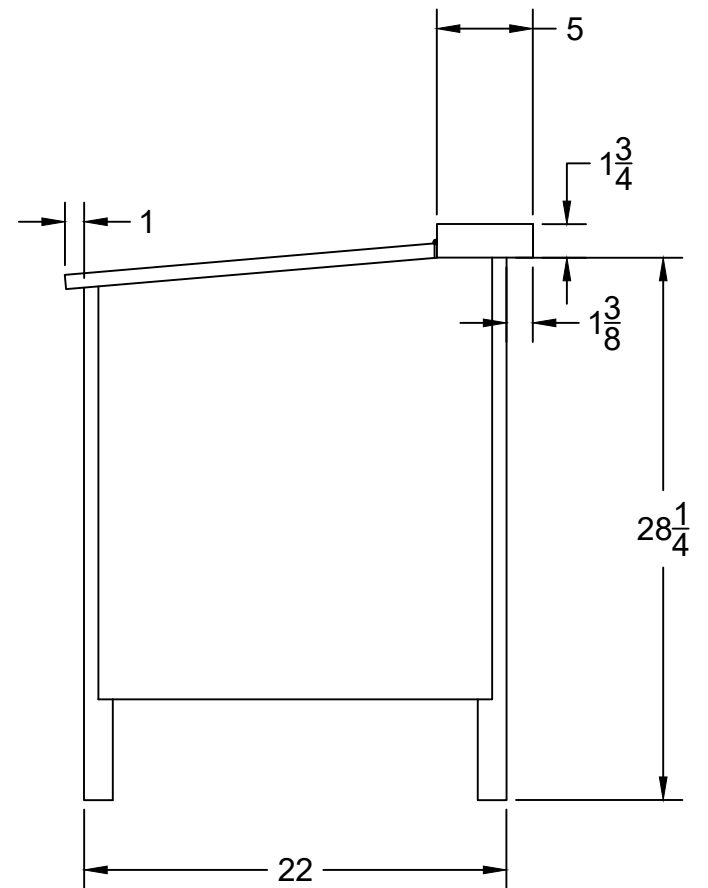
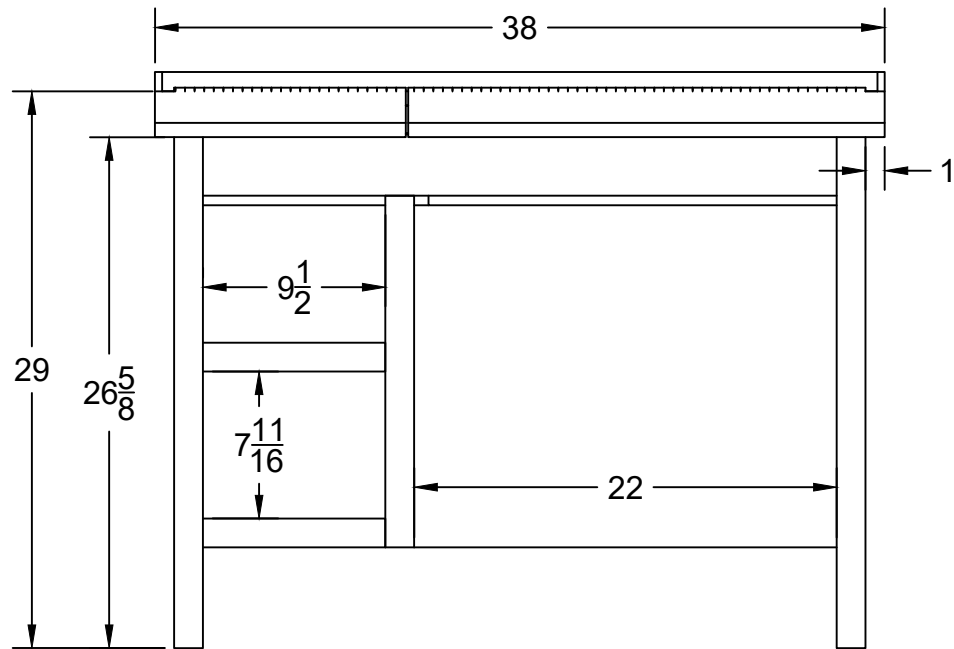
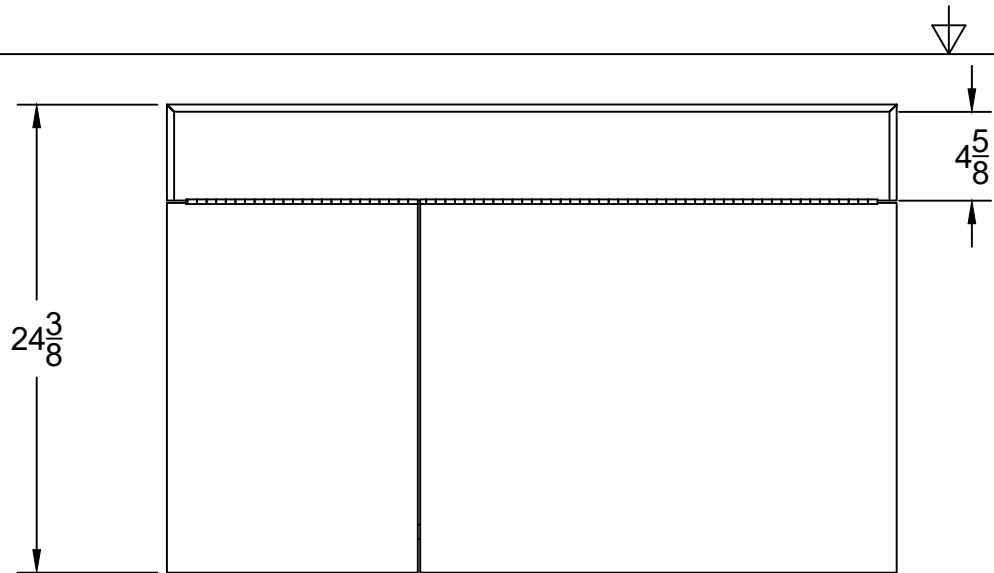
TITLE

HAART Desk

REV

SCALE 1:10

SHEET 1/11



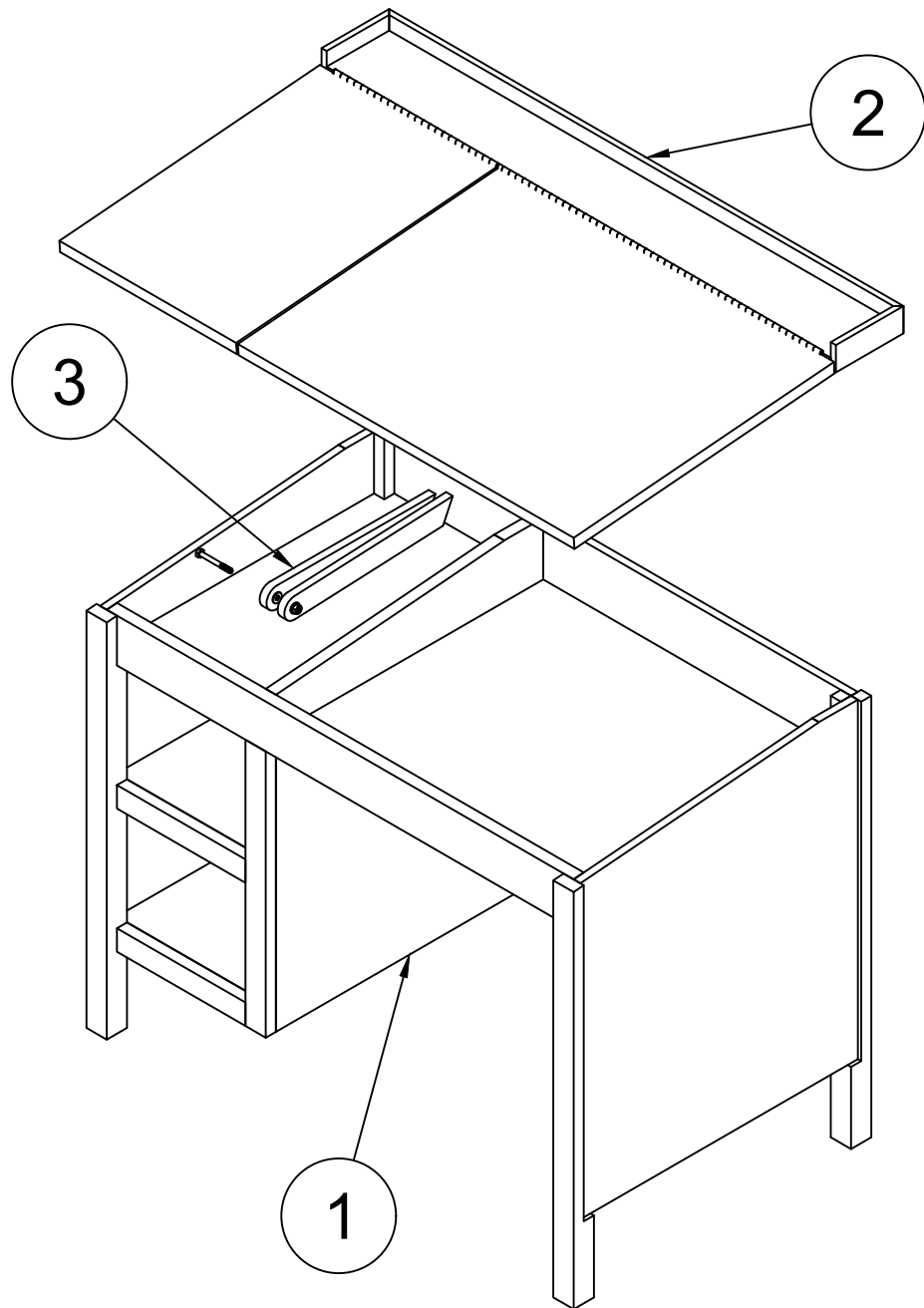
TITLE

HAART Desk Basic Dimensions

REV

SCALE 1:10

SHEET 2/11



| PARTS LIST | | |
|------------|-----|----------------|
| ITEM | QTY | PART NAME |
| 1 | 1 | BASE ASS'Y |
| 2 | 1 | TOP ASS'Y |
| 3 | 1 | LID STAY ASS'Y |

Top Assembly is attached to Base Assembly by nailing the rear flat fixed top.

Lid Stay Assembly is attached to Base Assembly by a 1/4-20 hex bolt through the vertical divider panel



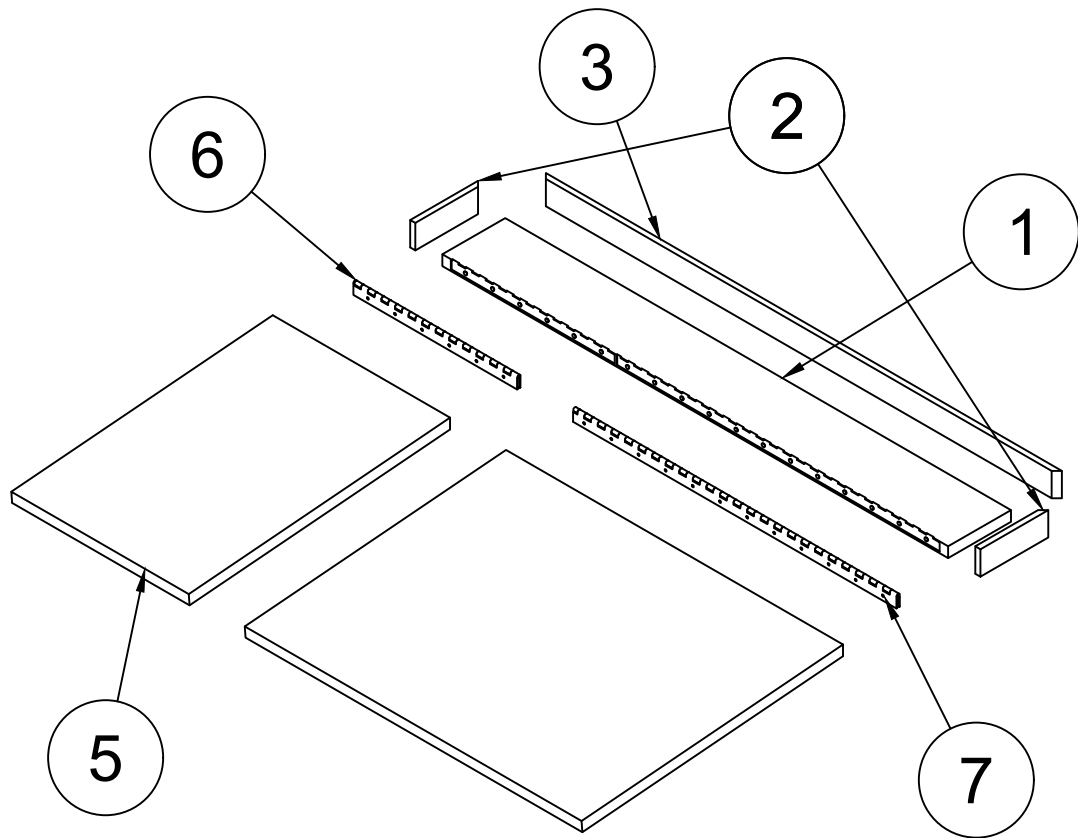
TITLE

HAART Desk Top-Level Exploded View

REV

SCALE 1:10

SHEET 3/11



| PARTS LIST | | |
|------------|-----|--|
| ITEM | QTY | PART NAME |
| 1 | 1 | DESKTOP EXTENSION |
| 2 | 2 | SIDE BAND |
| 3 | 1 | REAR BAND |
| 4 | 1 | RIGHT TOP |
| 5 | 1 | LEFT TOP |
| 6 | 1 | PIANO HINGE - 1-1/2" - 12-1/16" - #6 V3 |
| 7 | 1 | PIANO HINGE - 1-1/2" - 23-13/16" - #6 V3 |



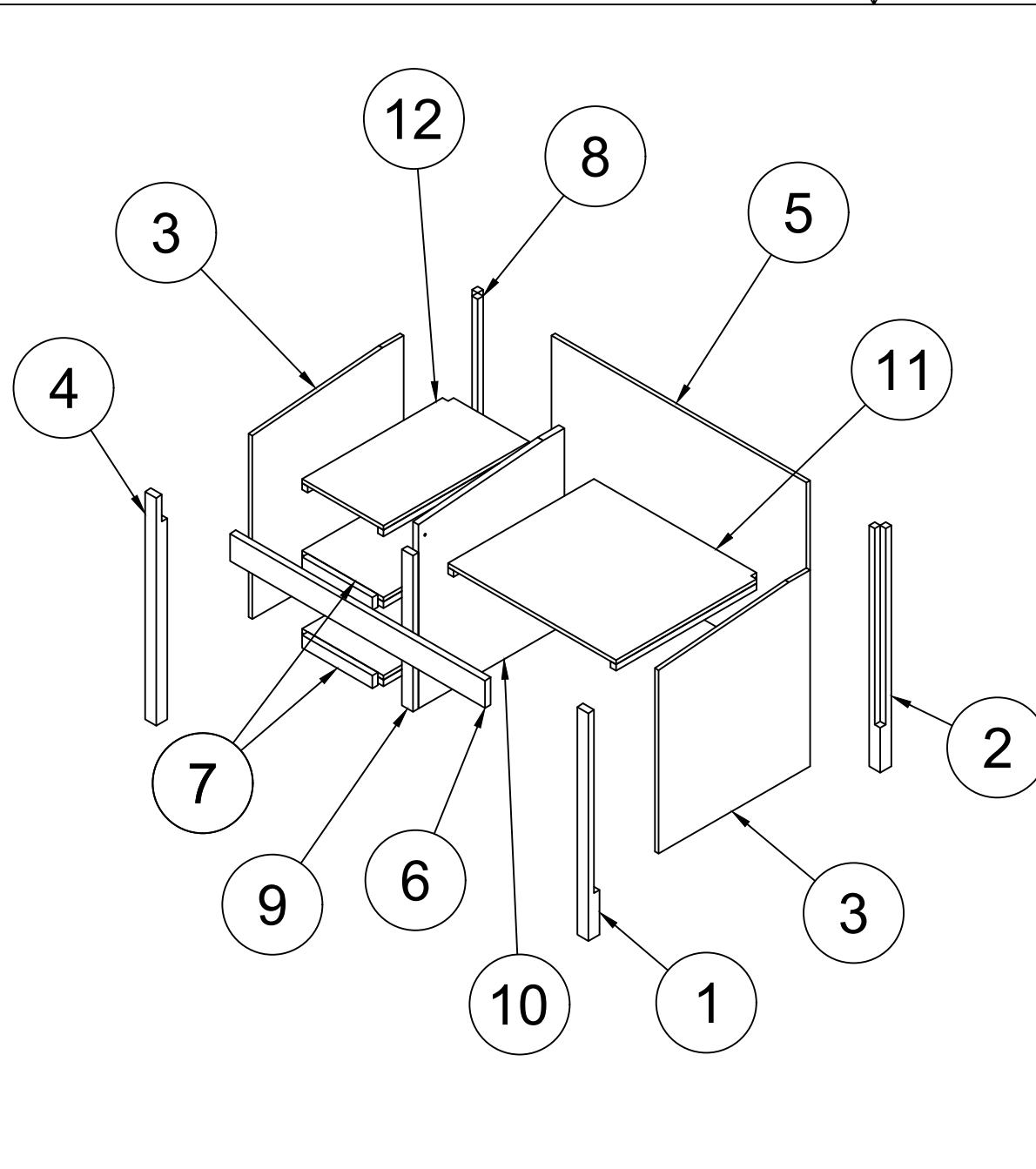
TITLE

HAART Desk Top Assembly Exploded View

REV

SCALE 1:10

SHEET 4/11



| PARTS LIST | | |
|------------|-----|----------------------|
| ITEM | QTY | PART NAME |
| 1 | 1 | FRONT RIGHT LEG |
| 2 | 1 | REAR LEG (R) |
| 3 | 2 | SIDE PANEL |
| 4 | 1 | FRONT LEFT LEG |
| 5 | 1 | REAR PANEL |
| 6 | 1 | FRONT SKIRT |
| 7 | 2 | SHELF |
| 8 | 1 | REAR LEFT LEG |
| 9 | 1 | VERTICAL FACE FRAME |
| 10 | 1 | SHELF SIDE PANEL |
| 11 | 1 | RIGHT STORAGE BOTTOM |
| 12 | 1 | LEFT STORAGE BOTTOM |



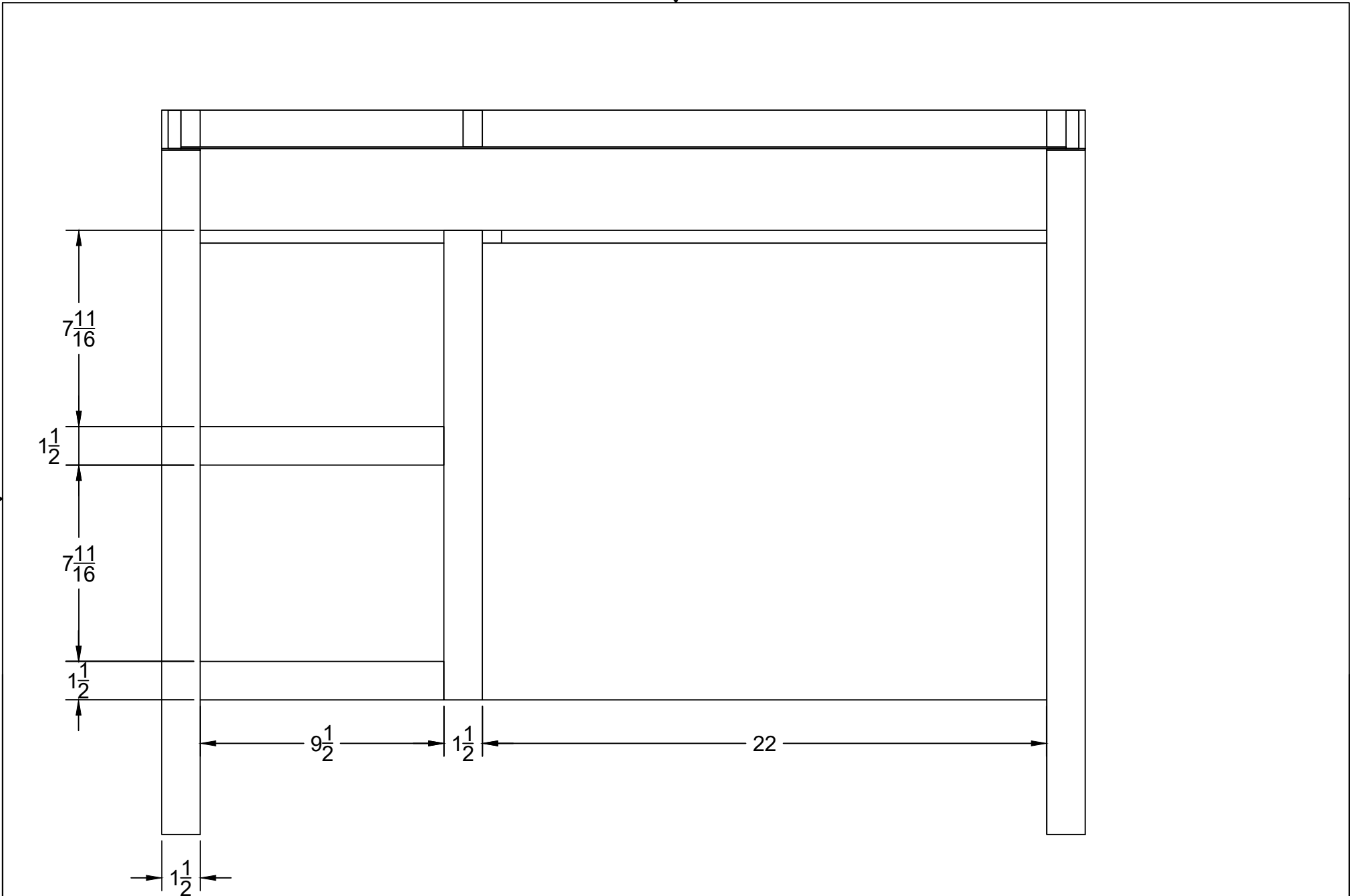
TITLE

HAART Desk Base Assembly Exploded View

REV

SCALE 1:16

SHEET 5/11

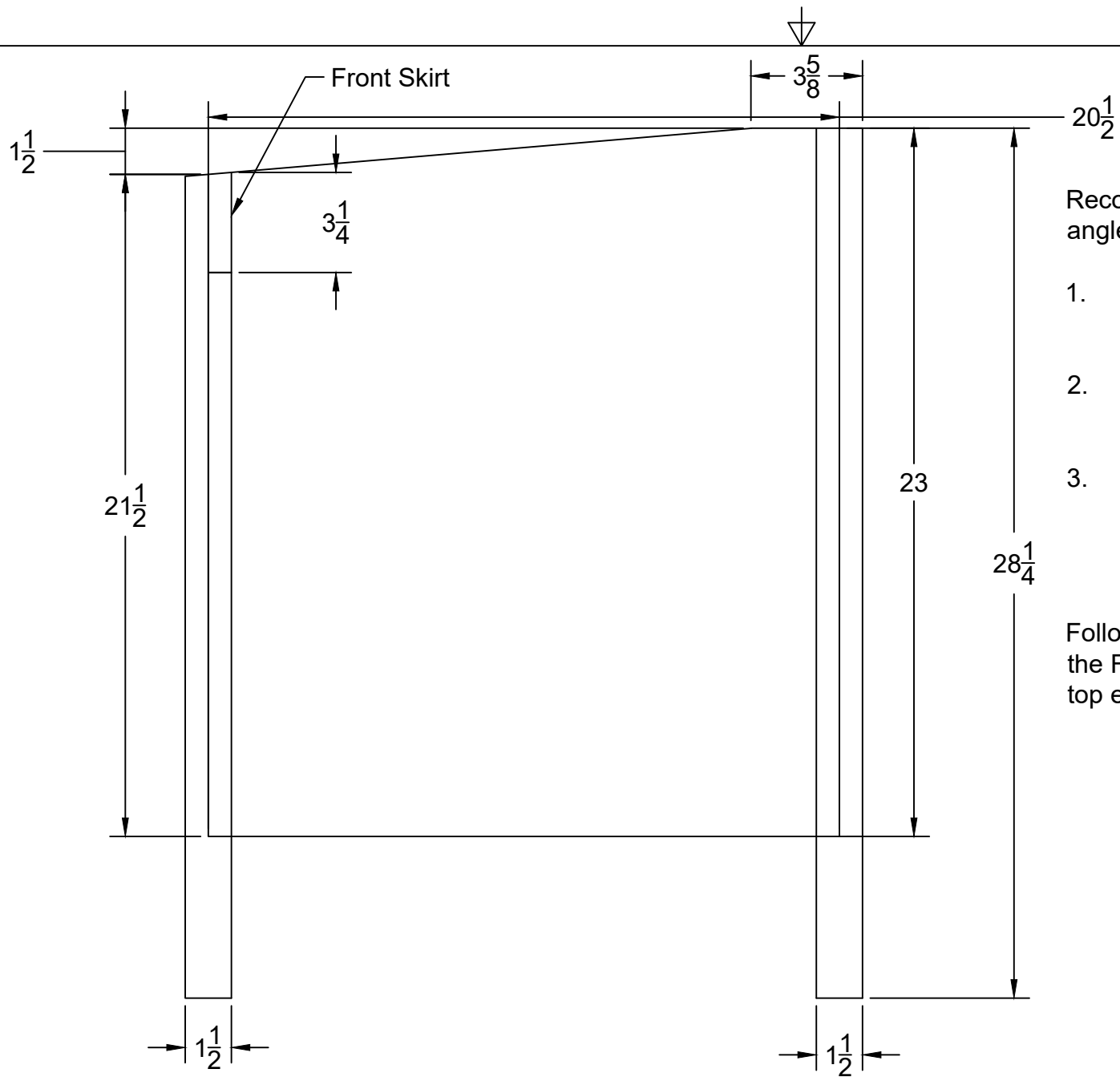


TITLE

HAART Desk Base Front View

| |
|------------|
| REV |
| SCALE 1:20 |
| SHEET 6/11 |





Recommended procedure for cutting the angled top:

1. Cut out the side panel to the specified shape.
2. Prepare the front legs longer than its final width, then route their stopped grooves.
3. Dry fit the side panel to mark the inside edge of the angled end and transfer the angle from the plywood to the saw using a bevel gauge.

Follow a similar procedure for the top edge of the Front Skirt. Mill to 3-1/4" wide then rip the top edge with proper bevel angle.



TITLE

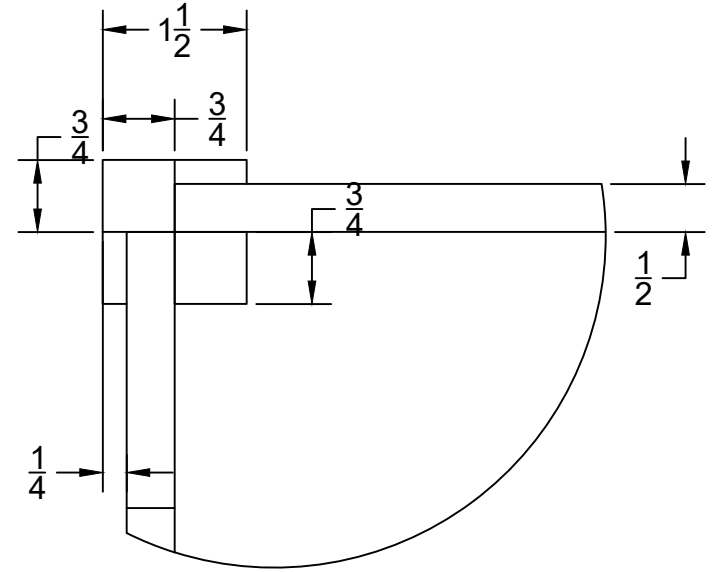
HAART Desk Base Side View

REV

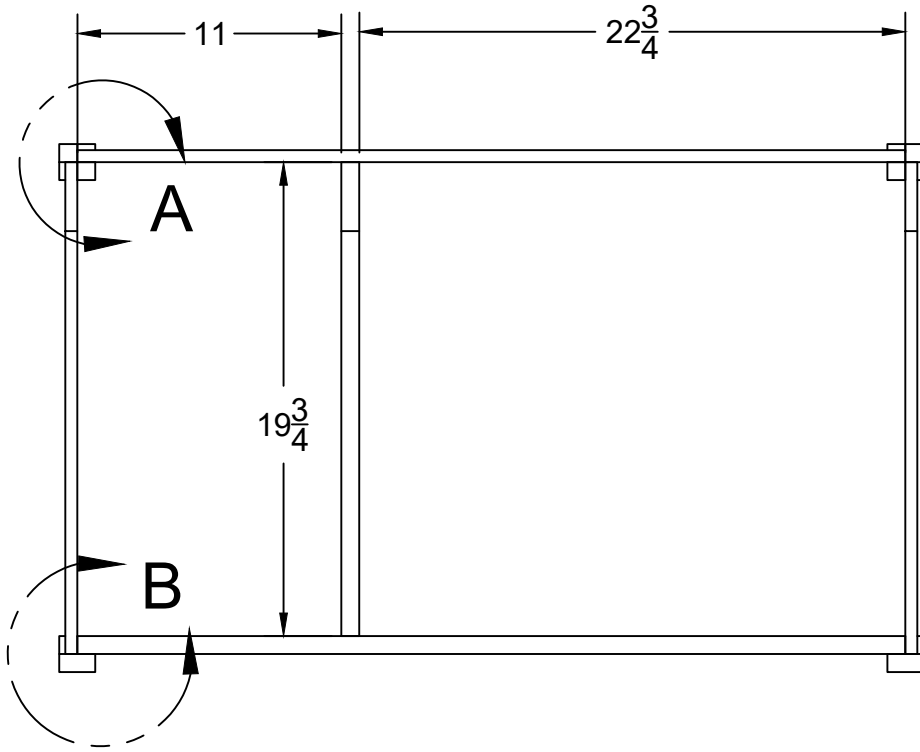
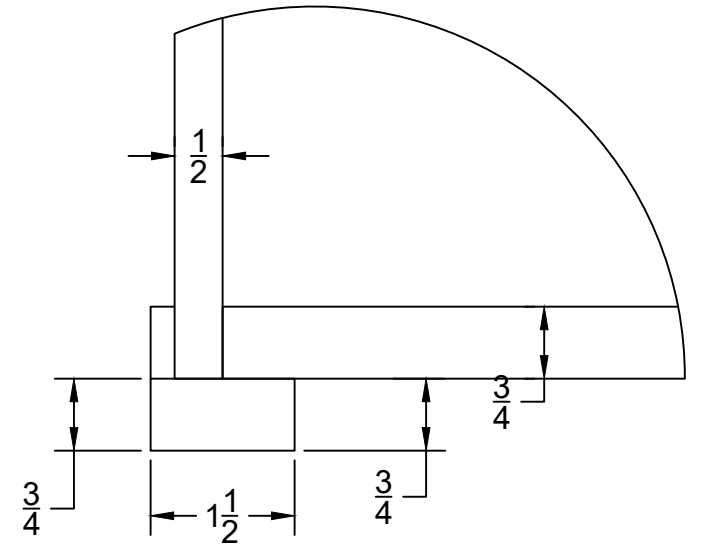
SCALE 1:10

SHEET 7/11

DETAIL A
SCALE 1:2



DETAIL B
SCALE 1:2



TITLE

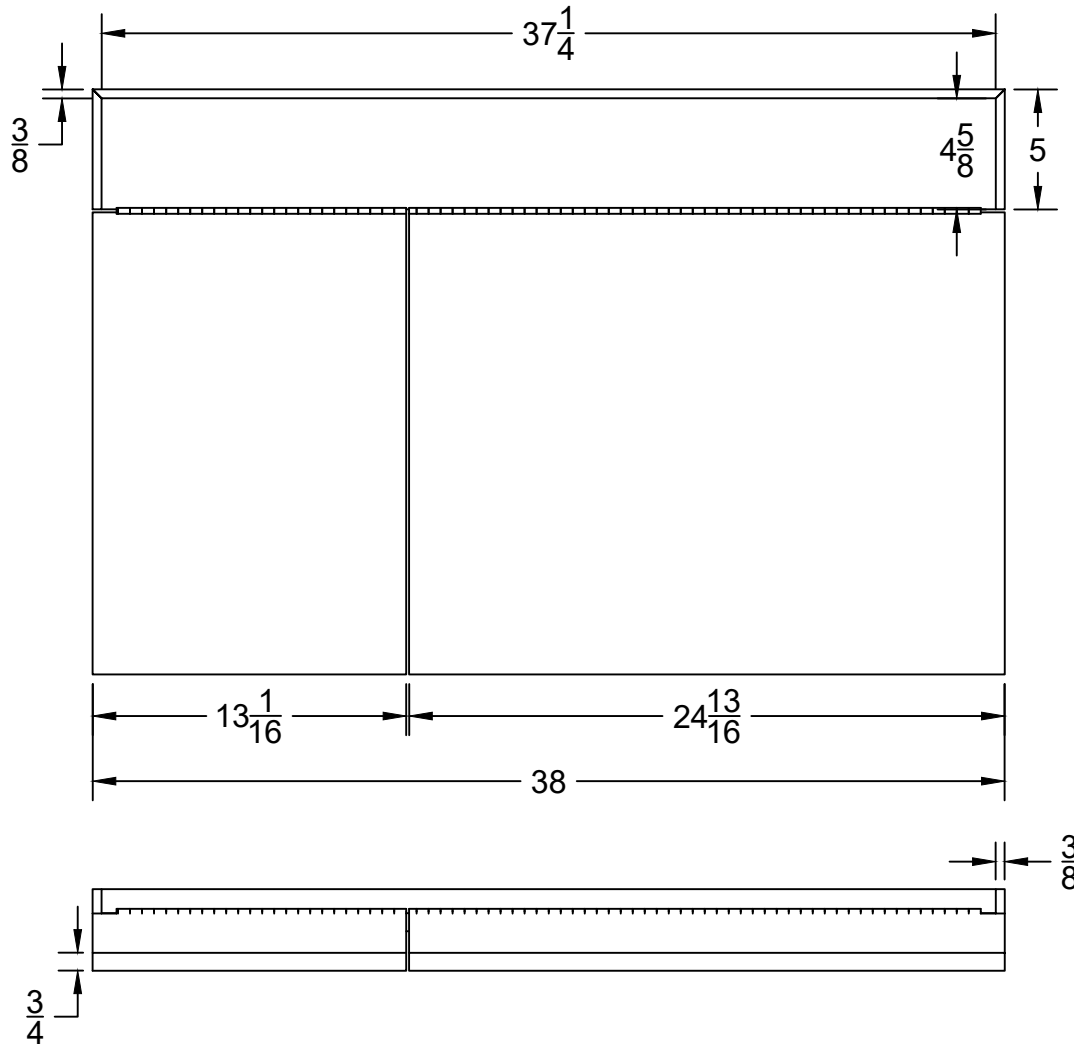
HAART Desk Base Leg-to-Panel Joinery

REV

SCALE 1:8

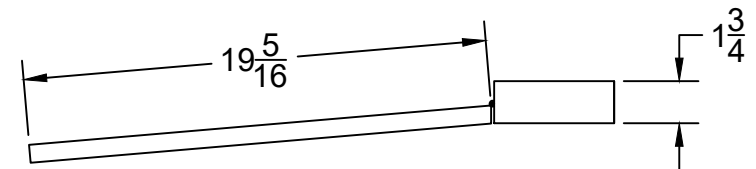
SHEET 8/11

Stops' are miter joined



An approach to cut slanted desktop boards:

1. Measure the angled edge of a Side Panel, add 1"
2. Cut out oversized 38"-long plywood panel, slightly wider than the measurement from Step 1
3. Cut the bevel so the panel fits snug against the fixed flat section (or piano hinges if already installed).
4. Place it on the base touching the fixed flat section. On the panel, mark 1" out of the front edge of the Base. Transfer the mark to the edge of the panel
5. Rip to the correct width at the mark
6. Trim non-hinged sides of the desktops and apply solid edgebanding (each $\frac{1}{2}$ " wide)
7. Cross-cut the panel into 2 pieces so that the saw kerf lies in the middle of the Shelf Side Panel (Part #10 on p.5)



TITLE

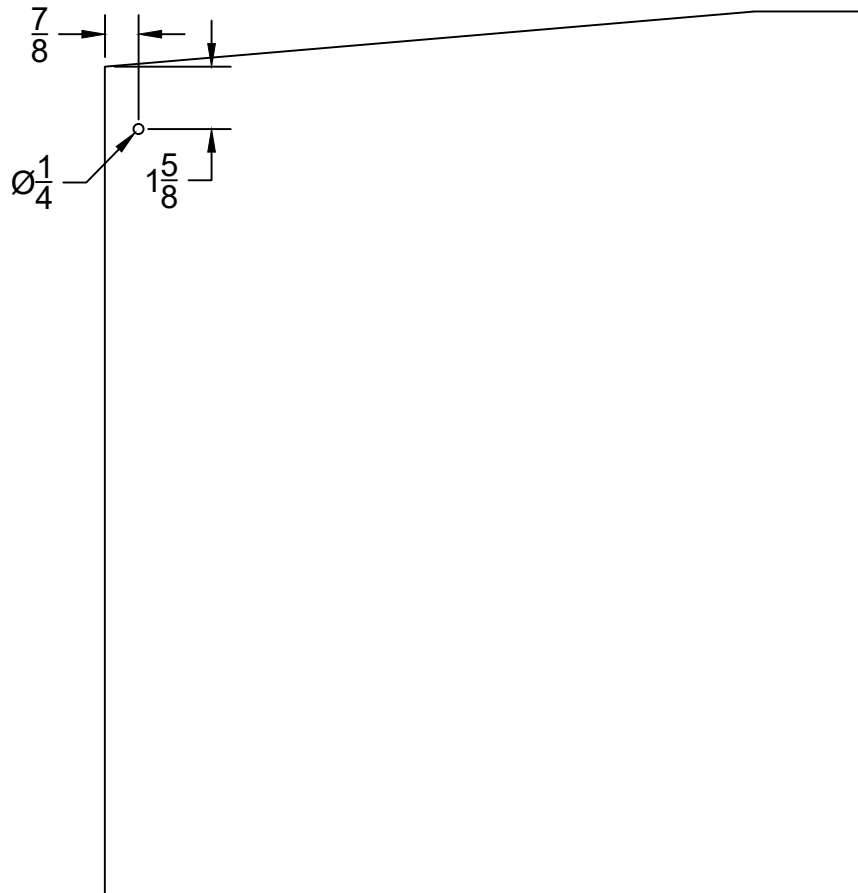
HAART Desk Top Ass'y Dimensions

REV

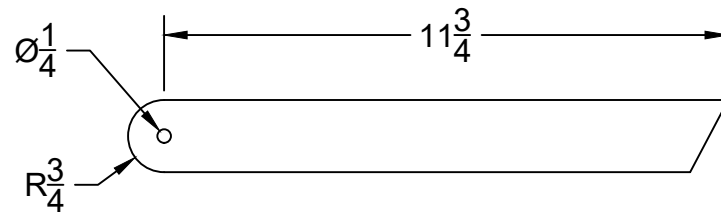
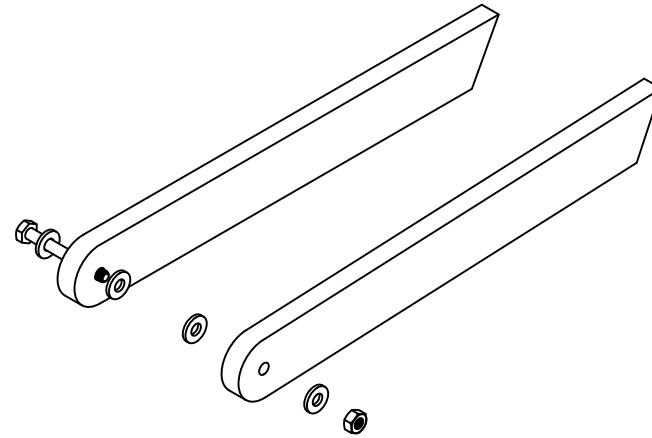
SCALE 1:20

SHEET 9/11

Placement of the mounting hole on the middle divider panel



Lid stays are mounted by a 2-1/4" long 1/4-20 bolt and a nut with 4 washers. Middle divider panel goes between the 2 center washers.



Determine the angle via experimentation



TITLE

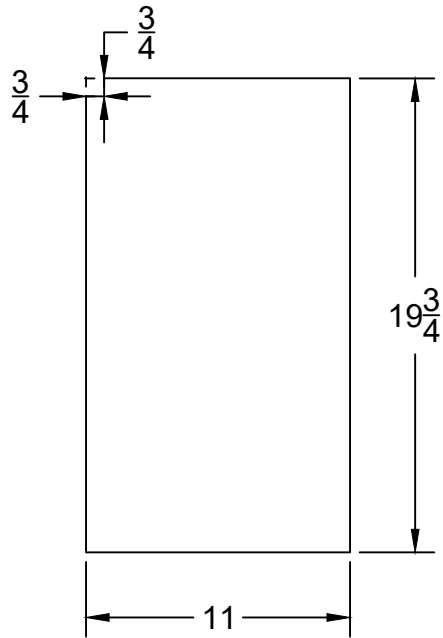
HAART Desk: Lid Stay Assembly

REV

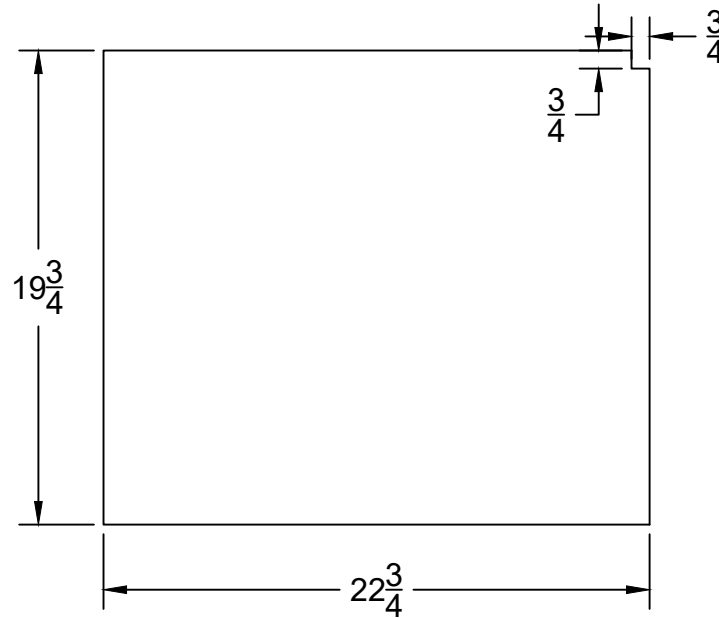
SCALE 1:5

SHEET 10/11

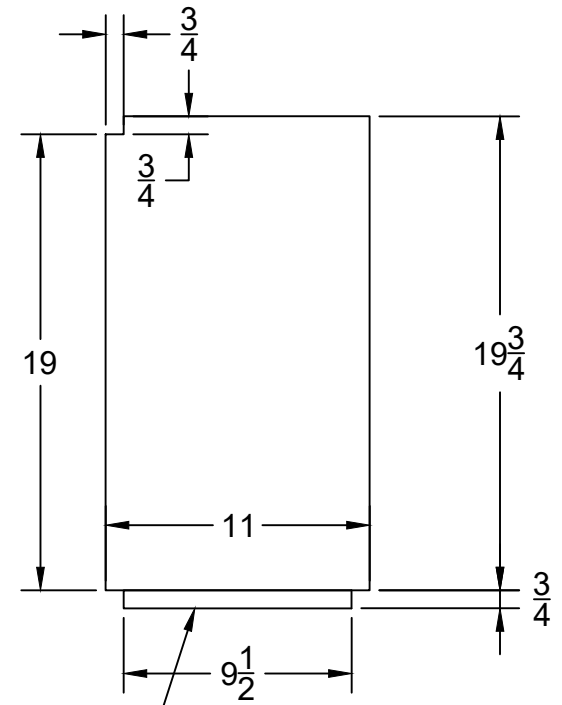
Left Storage Bottom



Right Storage Bottom



Shelf



All $\frac{1}{2}$ " plywood panels

Both sides and back are supported by $\frac{3}{4}$ x $\frac{3}{4}$ cleats

1-1/2"x $\frac{3}{4}$ " Face frame



TITLE

HAART Desk Storage and Shelf Panels

REV

SCALE 1:10

SHEET 11/11