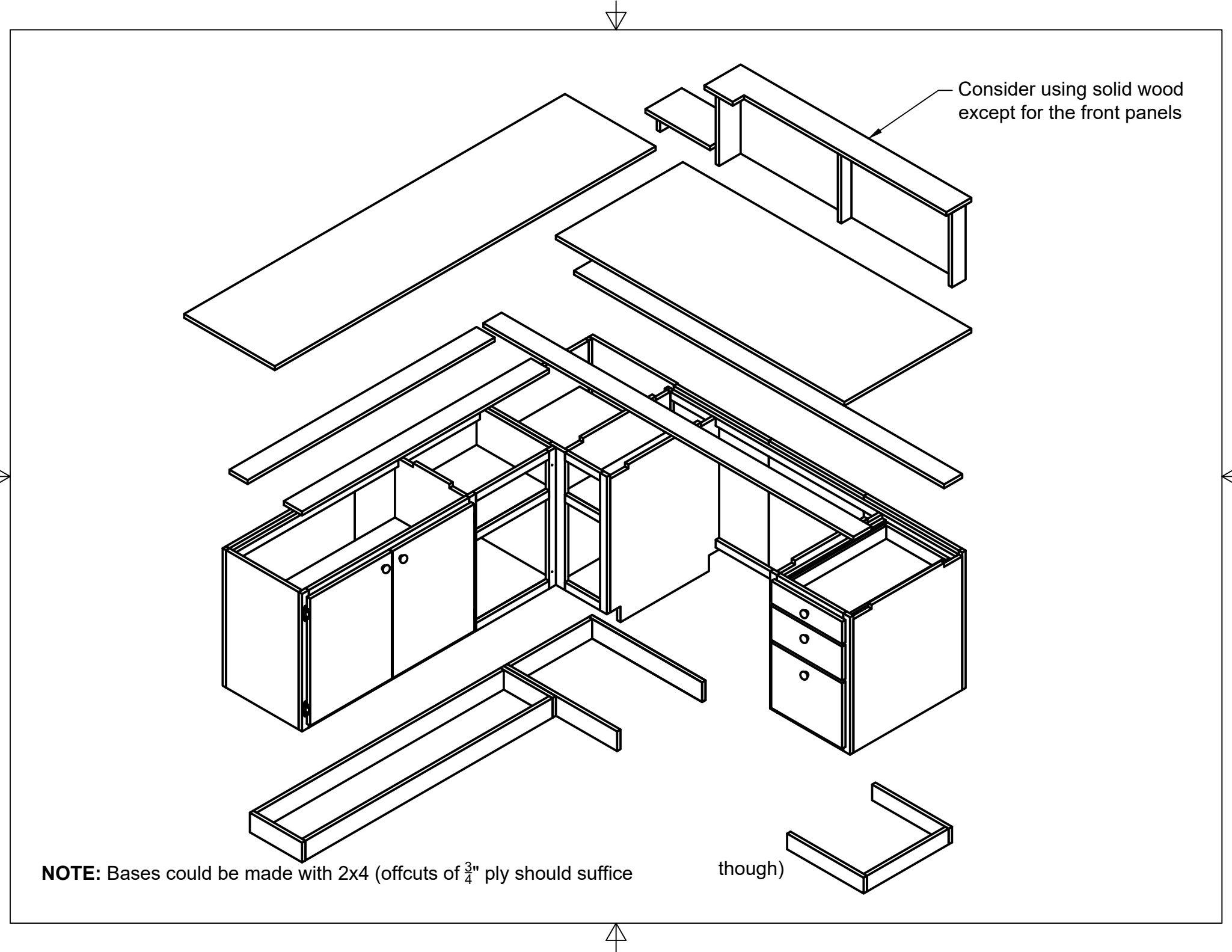


		PROJECT			
		BRWC Lighthouse Store Counter			
		TITLE			
		Exploded Views with Design Notes			
APPROVED	SIZE	CODE	DWG NO	REV	
CHECKED	A				
DRAWN	Takeshi Ikuma	1/4/2019	SCALE 1:40	WEIGHT	
			SHEET 1/6		

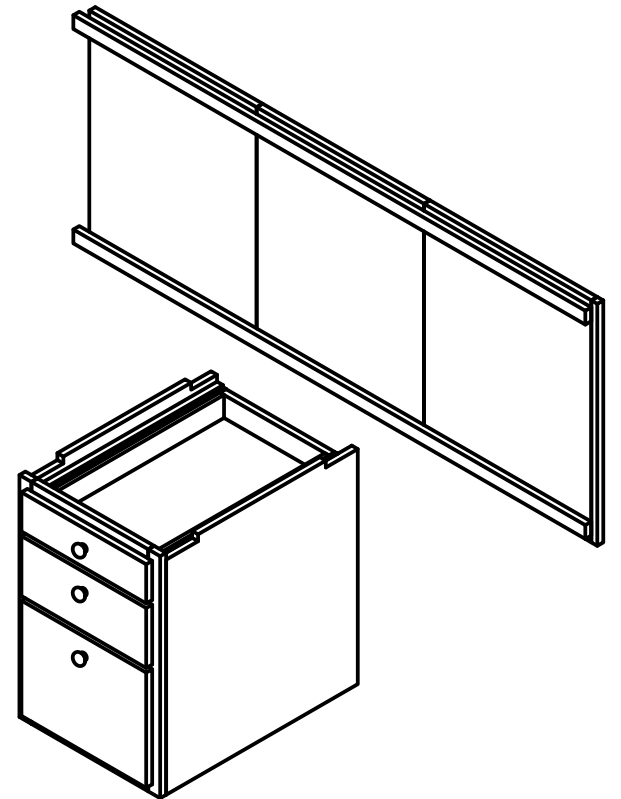
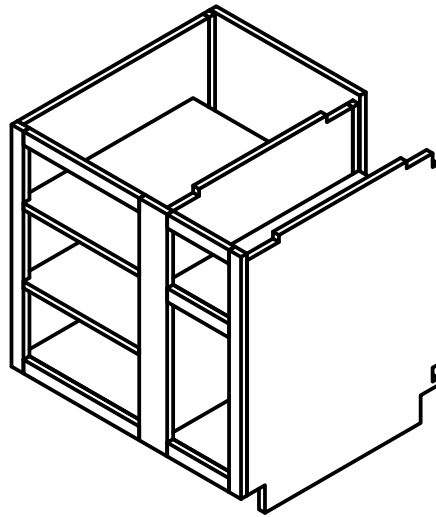
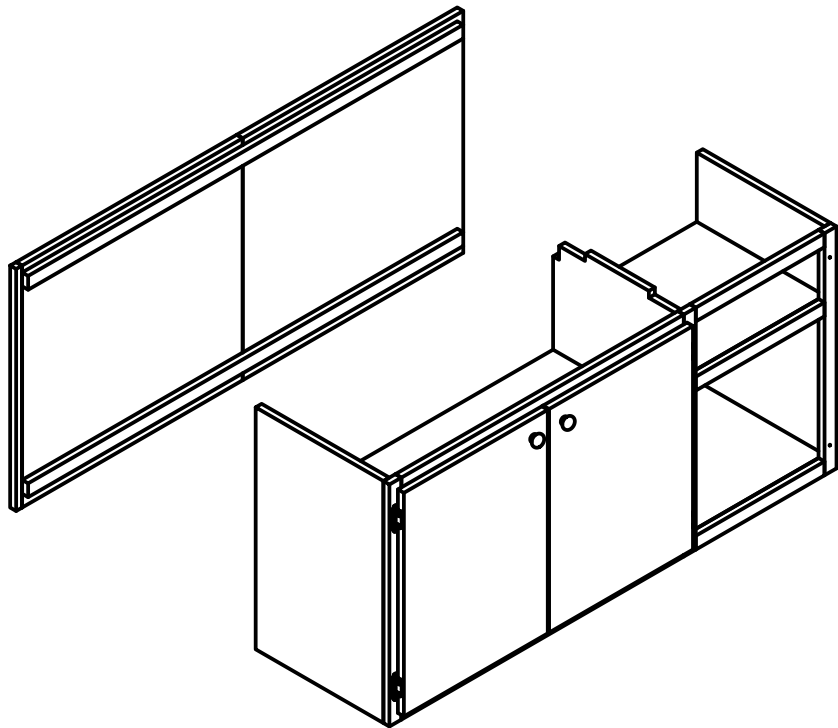


Consider using solid wood
except for the front panels

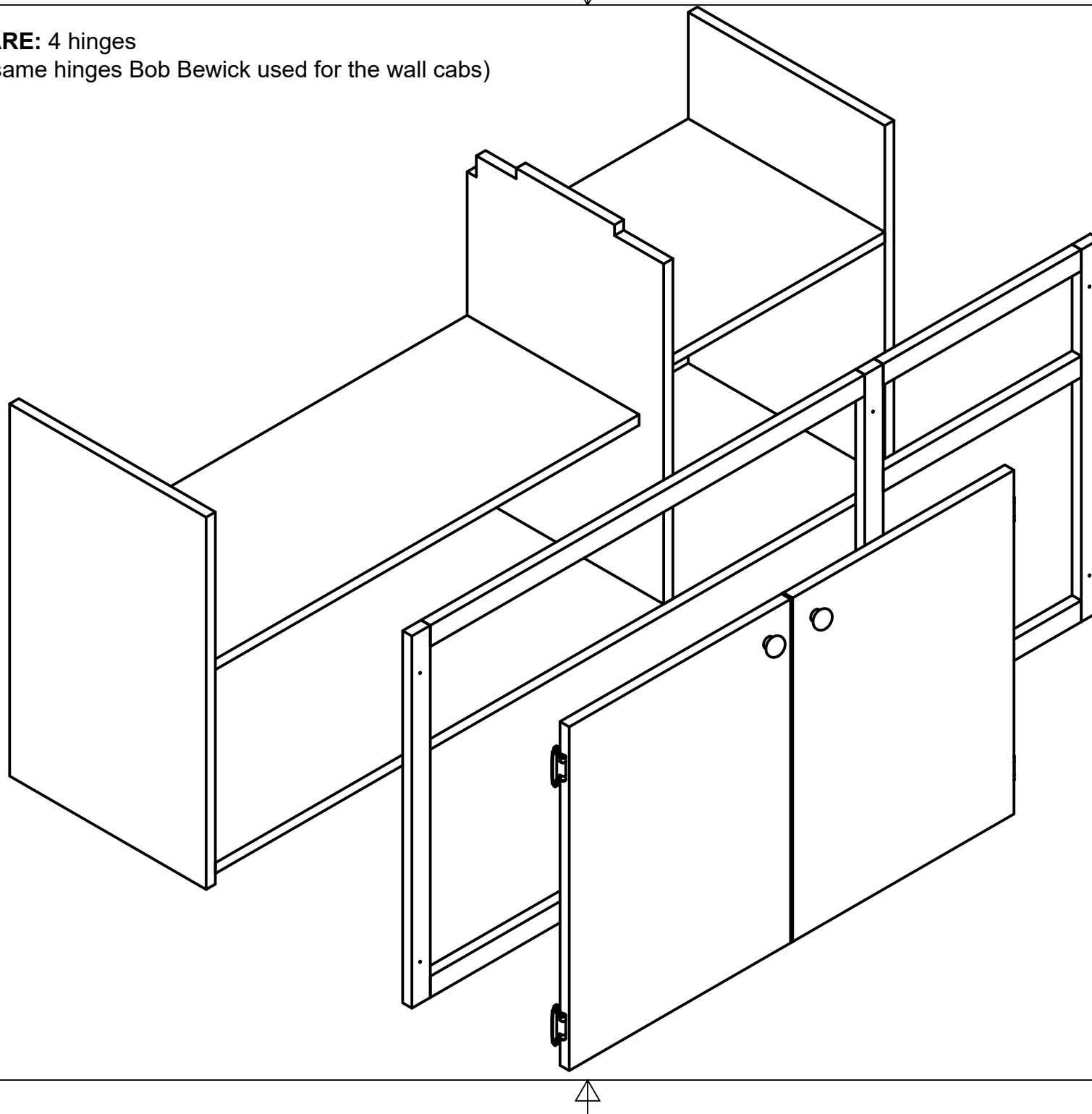
NOTE: Bases could be made with 2x4 (offcuts of $\frac{3}{4}$ " ply should suffice

though)

Note: Grain of all side panels runs vertically



HARDWARE: 4 hinges
(Use the same hinges Bob Bewick used for the wall cabs)



HARDWARE LIST

Drawer Slides: 23" Full Extension, 75 or 100 IB should suffice

File Hanging Rails (not pictured): 2x 1/8" thick, 1/2" wide, 24" long metal (steel/aluminum) bar stock

